

# galvanized

Majestic was founded on galvanized steel and continues to be a national distributor of prime product.

Because we continuously stock one of the largest available inventories of galvanized steel, we offer some of the shortest, most flexible lead times in the industry. In the just-in-time reality of today's business, you can count on us to have what you need, delivered when you need it.



# galvanized sizes

## Decimals (Gauges)

- 0.0127 inch min (30 gauge) - 0.1591 inch min (8 gauge)

## Grades

- Commercial Steel Type B (CS-B), formally known as LFQ
- Forming Steel (FS)
- Deep Drawing Steel (DDS)
- Structural Grade 50 (SS 50)

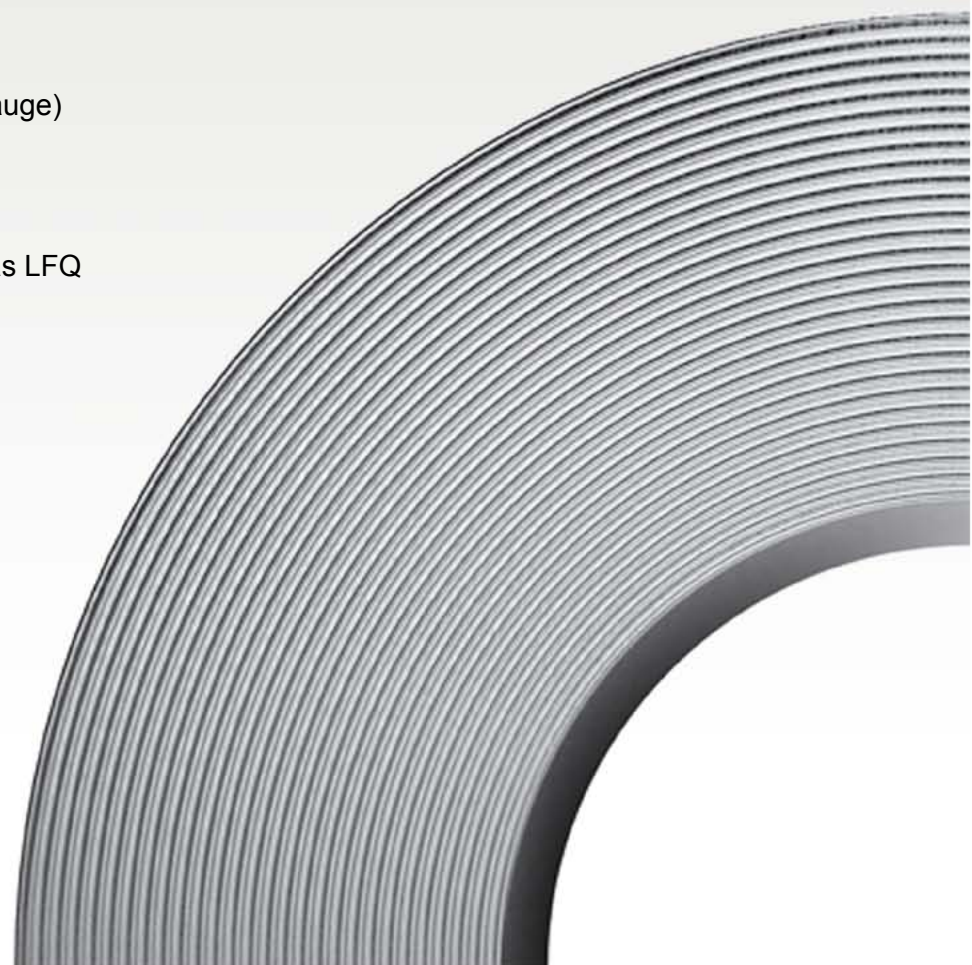
## Coils

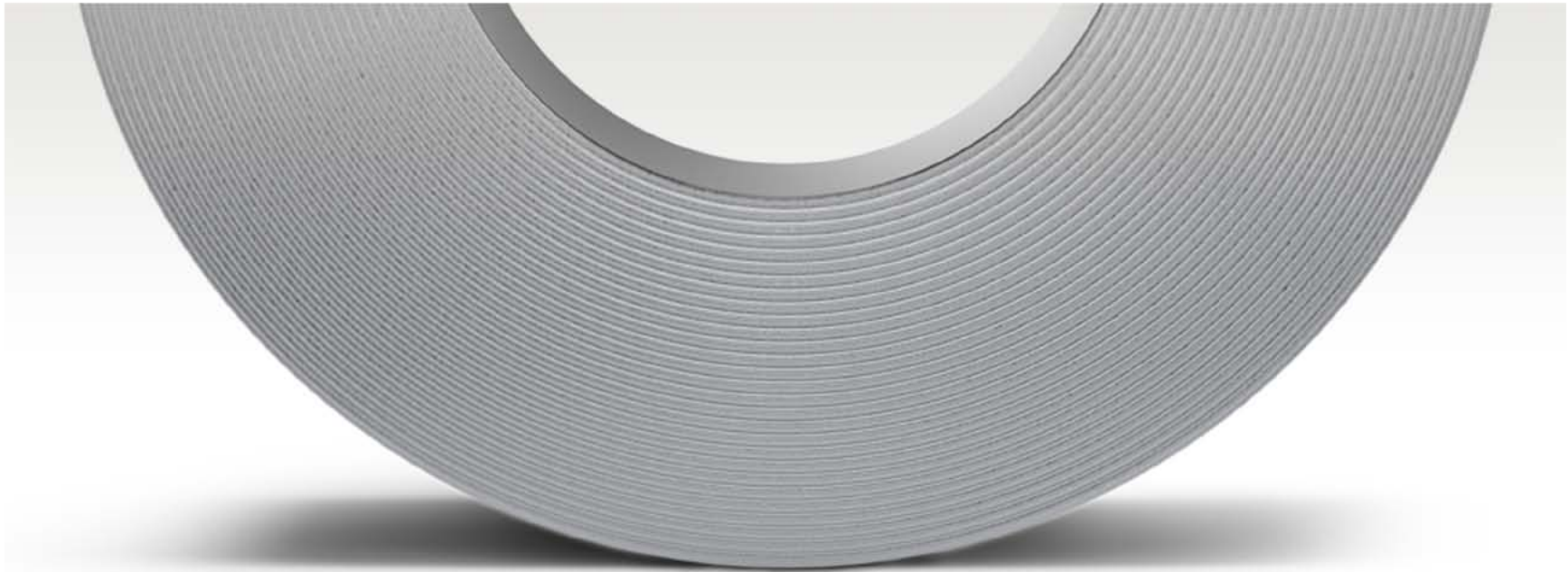
- 36-inch
- 48-inch
- 60-inch
- 72-inch
- 5.394-inch slit coil
- 5.5-inch slit coil
- 5.625-inch slit coil

## Sheets

- 36 x 96 inches
- 36 x 120 inches
- 48 x 96 inches
- 48 x 120 inches
- 60 x 120 inches

Custom coil and sheet sizes readily available upon request.





# surfaces

## Coating weights

- Regular Spangle
  - G30/G40
  - G60
  - G90
- Minimized Spangle
  - G90
- Phosphatized/  
Bonderized
  - G90

## Surface treatments

- Chem treat dry
- Chem treat and lightly oiled
- Non-chem treat and lightly oiled
- RoHS compliant chem treat

Custom coating weights readily available upon request.

Chem treat is also referred to as chemically treated, chromate treated and passivated.

Most products are ordered as tension leveled to help ensure flatness and prevent fluting and are available in UL (Underwriter Laboratories) approved coating weights.



**Specialty treatments**

- Prepainted (Minimized spangle, non-chem treat and lightly oiled)
- Embossed
- Beaded
- Perforated

# specialty treatments

# processing capabilities



**M** MAJESTIC STEEL USA

## Cut-to-length specs

- Red Bud precision equipment with in-line Herr-Voss levelers
- 0.010 inch (32 gauge) to 0.159 inch (8 gauge)
- Width capacity 72 inches
- Minimum length capacity 12 inches
- Maximum length capacity 215 inches

## Slit coil specs

- Braner equipment
- 0.010 inch (32 gauge) to 0.159 inch (8 gauge)
- Minimum 0.5 inch cuts
- Inside Diameter (ID) capacity 20 inches
- Outside Diameter (OD) capacity 72 inches
- Width tolerance +/- 0.005 inch

## Shearing specs

- 0.010 inch (32 gauge) to 0.159 inch (8 gauge)
- Minimum 1.0 inch cuts
- Width capacity 120 inches
- Length capacity 120 inches

Ask a member of our sales team to learn more about our blanking capabilities. Custom processing readily available upon request.



**Majestic Steel Sales**

31099 Chagrin Blvd. Suite 150  
Cleveland, Ohio 44124

phone: 800.321.5590  
fax: 440.786.0576

[info@majesticsteel.com](mailto:info@majesticsteel.com)

we will